

Warewashing Undercounter Dishwasher Insulated with pressure boiler drain pump, rinse aid & detergent dispensers

ITEM # _____

MODEL # _____

NAME # _____

SIS # _____

AIA # _____


520004 (EUC40G36)

 Undercounter dishwasher,
 double skin, insulated with
 pressure boiler, drain pump,
 rinse aid & detergent
 dispenser, 400V/3N/60Hz -
 China & South East Asia

Short Form Specification

Item No. _____

Unit shall be green&clean undercounter type hot water rinsing dishwashing machine with pressure boiler. Electrical characteristics to be __400 volts three phase operation with three automatic cycles of 90/120/180 seconds for lightly, normal or heavily soiled items. Rinse temperature and pressure guaranteed by built in pressure boiler. Washing performance is guaranteed by a powerful wash pump, upper and lower revolving washing spray arms. 304 Stainless steel construction to include door, frame, wash tank. The unit shall include drain pump, detergents and rinse aid dispenser pumps.

Main Features

- Built-in pressure boiler designed to raise incoming water to a guaranteed minimum temperature of 82° C for sanitizing rinse. No external boiler is required.
- Unique temperature interlock guarantees required temperatures in both the wash and final rinse in case of emergency cold water feeding.
- Washing capacity of 40 baskets or 720 dishes per hour.
- 90/120/180 seconds cycle for different soiled levels
- Few seconds (variable) pause after washing and before rinsing ensures that no drops of unclean water will fall on the clean items.
- An effective rinse system uses only 2.8 liters of clean hot water per basket for lower running costs.
- Double skinned insulated wall ensures a low noise level and a reduction in heat loss from the machine.
- Utilizes fresh hot rinse water.
- Low noise level.
- IPx4 water protection.
- State-of-the-art electronic controls with built-in programming, self-diagnostics for serviceability and automatic interior self-cleaning cycle.
- Digital read-out keeps operator informed as to temperatures.
- Plug-in designed with integrated drain pump, detergent and rinse aid dispensers for fast and easy installation.
- Built-in detergent and rinse aid dispenser with automatic initial and continuous cycle loading for perfect results while minimizing service and maintenance needs.

Construction

- Heavy duty Stainless steel construction.
- Internal cavity as well as exterior panels are all 304 series Stainless steel.
- Revolving wash/rinse arms above and below the basket.
- Interchangeable wash/rinse arms screw out for simple clean up.
- Element protection from dry fire and low water.

Sustainability

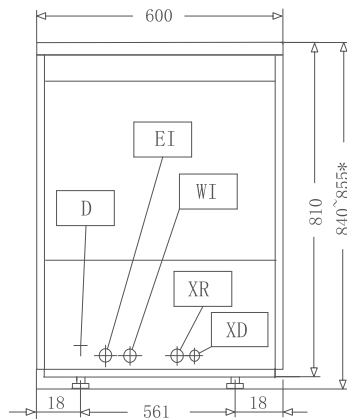
- Triple layer filtering system having large tank filter with double layer strainer to keep water clean for a long time.

Included Accessories

- 1 of Stabbing basket 18 PNC 888023 dishes 500x500mm

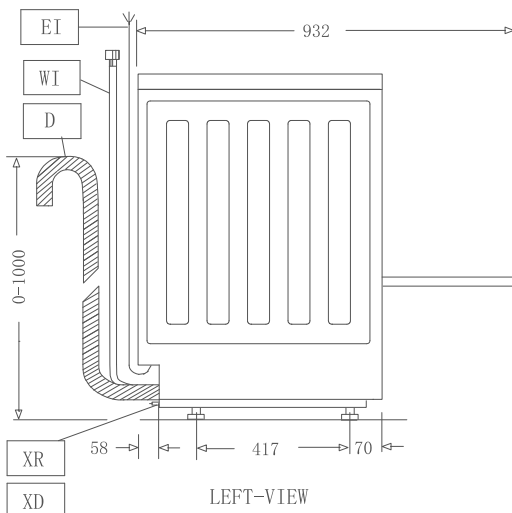
APPROVAL: _____

Front



FRONT-VIEW

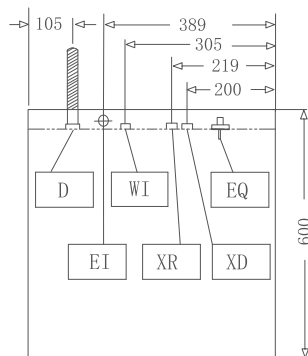
Side



LEFT-VIEW

- D = Drain
- EI = Electrical inlet (power)
- EO = Electrical Outlet
- HWI = Hot water inlet
- XD = Detergent connection
- XR = Rinse aid connection

Top



TOP-VIEW

Electric

| | |
|--------------------------|-------------------|
| Supply voltage: | 400 V/3N ph/60 Hz |
| Default Installed Power: | 5.05 kW |
| Tank heating elements: | 2 kW |

Water:

| | |
|---|-------------------------|
| Water supply hardness (°fH / °dH): | 7-14 / 4-8 |
| Cold rinse cycle water consumption: | 3 lt |
| Hot rinse cycle duration (sec.): | ISO 9001; ISO 14001 |
| Min hot rinse water consumption (lt/cycle)**: | 2.8 |
| Water supply temperature*: | 10-60 °C |
| Drain line size: | 22mm |
| Inlet Water supply pressure: | 29 - 73 psi (2 - 5 bar) |
| Boiler Capacity (lt): | 5.5 |
| Tank Capacity (lt): | 16 |

Key Information:

| | |
|------------------------------|----------------|
| N° of working cycles: | 3 (90/120/180) |
| Wash temperature: | 55°C |
| Cell dimensions - width: | 500 mm |
| Cell dimensions - depth: | 500 mm |
| Cell dimensions - height: | 310 mm |
| Rinse temperature: | 80-90 °C |
| External dimensions, Width: | 600 mm |
| External dimensions, Depth: | 600 mm |
| External dimensions, Height: | 840 mm |
| Shipping weight: | 68 kg |
| Shipping height: | 1000 mm |
| Shipping width: | 700 mm |
| Baskets per hour: | 40 |
| Dishes per hour: | 720 |
| Program Cycle time: | 90/120/180 |

Sustainability

| | |
|--------------|---------|
| Noise level: | <70 dBA |
|--------------|---------|